


interSeptor Pro

 www.jakarta.com

 +44 (0) 1672 511125

 info@jakarta.com

Environmental Monitoring and Alert System for Data Centres and Racks

Feature Overview

- Supports up to 24 temperature/humidity Sensors
- Supports up to 48 Additional Environmental Alarm Sensors
- Voice, SMS, Email and SNMP Alerts
- Web Browser Interface



Key Features

- 3 versions: 8-port, 16-port, 24-port
- Remote temperature/humidity monitoring across Ethernet network (all temperature/humidity sensors supplied)
- Provision to connect up to 48 optional Go-Probe sensors (water, smoke, security, power, etc.)
- Monitoring via web browser, Telnet and SNMP network management system
- Email and SNMP Alerts
- SMS Alerts via optional GSM Modem
- Automated voice and SMS alerts with escalation procedure and alarm acknowledgement via Jakarta Alert Centre (optional)
- Alarm Schedule facility to enable alerts to be sent only when required
- Extensive on-board data logging and graphing
- Relay outputs for automated crisis management
- 8-port interSeptor Pro can also be supplied with 2, 4 or 6 temperature/humidity probes

Preventing Data Centre Disaster

Crucial to any business continuity strategy is the implementation of an effective monitoring and alerting system. Air-conditioning failure, water ingress, fire, power failures and physical security breaches are just a few of the many potential problems that seriously threaten the integrity of network hardware and data.

In situations where rooms are unmanned for any length of time, especially at weekends and overnight, these problems can, if left unattended, result in significant network downtime and cost.

interSeptor Pro provides an advanced, yet uncomplicated solution to Data Centre room/rack monitoring and early-warning alarm notification. Environmental conditions can be monitored and logged, alarm thresholds configured, and automated early-warning alerts delivered to key IT personnel via telephone voice messages, SMS, email, web browser and SNMP traps. An Alarm Beacon/Sounder option is also available for on-site visual and audible alerts if required.

Flexibility, Scalability for Maximum Return on Investment

interSeptor Pro is available in 3 models, equipped with 8, 16 or 24 environmental ports. Each interSeptor Pro environmental port can monitor a temperature/humidity probe, and from that probe a further 2 alarm sensors can be monitored. The design of the interSeptor Pro therefore provides superb scalability and flexibility, with the 24-port unit being able to monitor up to 24 temperature/humidity sensors and up to 48 alarm sensors.

Advanced Features to Meet Changing Data Centre Requirements

In keeping with other Jakarta products, interSeptor Pro is easy to install and remarkably easy-to-use. The device can be monitored using a web browser, Telnet or Network Management System using SNMP.

interSeptor Pro's powerful feature-set also allows for control of rack doors and other on-site facilities remotely or via an optional USB keypad.

Automatic switching/control of associated local devices during crisis conditions is also possible, as is extensive logging of data centre conditions for pro-active analysis and fault-finding.

interSeptor Pro uses Cat5 cable to connect between its RJ45 environmental ports and temperature/humidity probes. This makes it extremely easy to locate all sensors where needed and re-locate if necessary as required.



Configuration

IP configuration can initially be carried out via the front panel LCD using the menu buttons. Full configuration of temperature and humidity high/low threshold settings, polling and logging options, alerting options, etc. can then be carried out quickly and easily via a web browser.

Monitoring

Monitoring of the interSeptor Pro can be carried out over the internet using a web browser or via a Network Management system using SNMP.

Alerts

Email and SNMP alerts can be triggered to provide early warning of environmental conditions. In addition, voice alerts to mobile/landline telephones, and SMS alerts can be activated in conjunction with the Jakarta automated Alert Centre facility. The Alert Centre service can provide alarm notifications to up to 6 personnel in an escalation sequence to ensure alerts can be managed efficiently. Alternatively, SMS messages can be transmitted via an optional GSM modem. The interSeptor Pro can use any standard SMTP Mail Server to relay email alerts in the event of alarm conditions. If you use an encrypted hosted email exchange – such as Office 365 or Gmail – please contact us for further information and to confirm compatibility before purchasing.

Logging

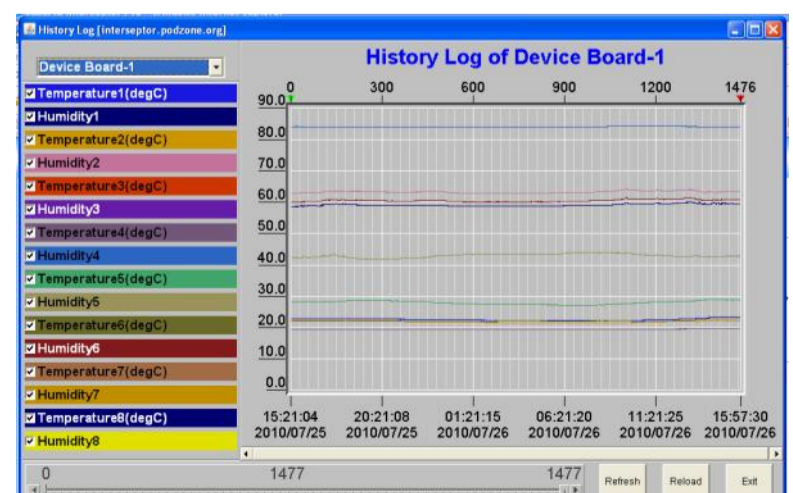
interSeptor Pro has extensive on-board logging capabilities to ensure alarm conditions can be tracked, early identification of potential problems carried out and trend analysis conducted as required. Log files can be delivered to key personnel daily in .csv format or downloaded as required.

Graphing

interSeptor Pro's onboard Java graphing feature enables log files to be analysed instantly via a web browser for trend analysis and problem solving.

Installation

interSeptor Pro has been designed for ease of installation and use. Multiple temperature/humidity sensors are provided out-of-the-box to ensure individual rack and room monitoring can begin immediately. Customers can choose to implement their own Cat5 (straight-through) cabling between the sensors and the interSeptor Pro's RJ45 ports or alternatively purchase one of the optional Sensor Cabling packs.



interSeptor Pro - Sensors



Temperature and Humidity Sensor

Each interSeptor is supplied with the required number of temperature/humidity sensors for the version purchased. i.e. 8, 16 or 24. Two optional Go-Probe sensors can also be connected to each temperature/humidity probe from the range of sensors detailed below. High/low warning and critical alarm thresholds can be easily configured via the interSeptor Pro's web browser interface.



Water Detector

The Jakarta interSeptor Pro water detector uses an advanced leak detection cable to sense the presence of water along its length. The water detector can be supplied with either 3 or 18m of sensor cable and 4m of interface cable.



Security Sensor

The Jakarta interSeptor Pro Security Sensor is a magnetic reed switch that can be used to detect the opening of doors, racks, windows and cupboards.



Smoke Detector

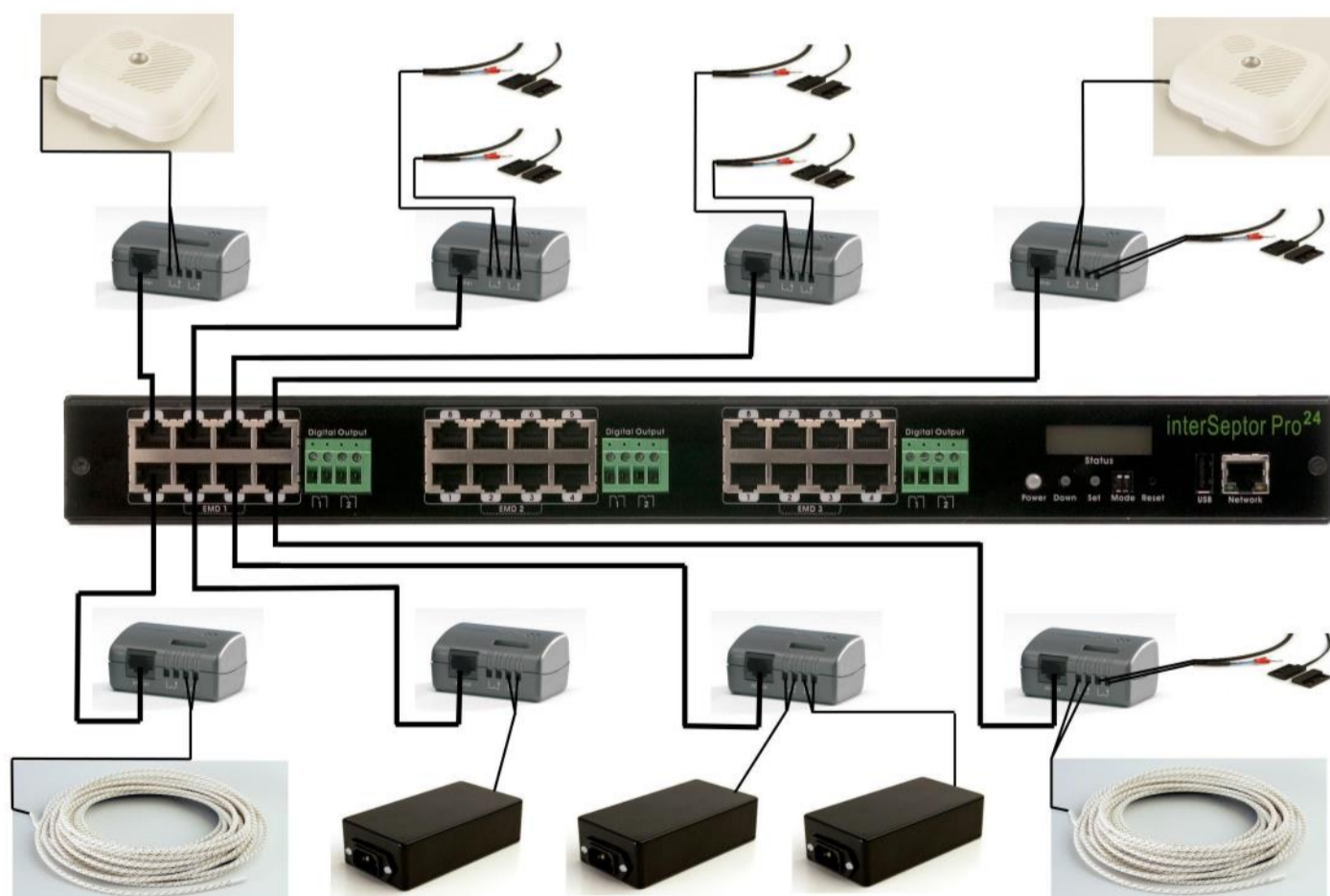
The Jakarta interSeptor Pro Smoke Detector is a mains powered, ionisation based smoke detection unit that can be positioned to monitor for early signs of fire, providing both an interSeptor alarm and an audible alarm upon detection. This sensor is provided with either a 4 or 18m interface cable.



Voltage Sensor

The Jakarta interSeptor Pro Voltage Sensor can be used to monitor spare power outlets for outages and interruptions. As soon as power to the outlet is lost the interSeptor will provide an alarm. This sensor is provided with either a 4 or 18m interface cable.

Alternative cable lengths are available with all Jakarta Go-Probe sensors if required.



interSeptor Pro with 8 temperature/humidity sensors, plus water leak, smoke, power and security sensors attached

Additional Optional Equipment for interSeptor Pro

- Dry Contact/Universal interface cables for connection to onsite facilities (eg. air conditioning, UPS, alarm panel etc.)
- Alarm Beacon/Sounder for local audible/visual alerts
- USB keypad for manual operation of relay outputs (for access control, etc.)
- interSeptor Pro Cable Pack including various lengths of Cat5 cable to connect between the interSeptor Pro and the temperature/humidity sensors
- GSM Modem for SMS Alerts—The interSeptor Pro utilises the Sierra Wireless G8200 GSM Modem to provide SMS Alerts



Left: interSeptor Pro GSM Modem

Customer Service

Technical support is available for the interSeptor Pro directly from a member of the Jakarta Technical department via email and telephone, free-of-charge. We aim to respond as quickly and efficiently as possible with minimum customer inconvenience.

Warranty

interSeptor Pro is supplied with a 2-year swap-out warranty in the unlikely event of a problem.

The interSeptor Pro is available in the following versions:

| | |
|--|--------------|
| interSeptor PRO 8-port(2) (inc. 2 x Temp/Humidity) | ISPROUK/EU02 |
| interSeptor PRO 8-Port(4) (inc. 4 x Temp/Humidity) | ISPROUK/EU04 |
| interSeptor PRO 8-Port (inc. 8 x Temp/Humidity) | ISPROUK/EU08 |
| interSeptor PRO 16-Port (inc. 16 x Temp/Humidity) | ISPROUK/EU16 |
| interSeptor PRO 24-Port (inc. 24 x Temp/Humidity) | ISPROUK/EU24 |

interSeptor Pro—Specifications

| | 8-Port | 16-Port | 24-Port |
|---------------------------------|--|---------|---------|
| • Sensors:Temp/humidity: | 8 | 16 | 24 |
| • <i>Go-Probe</i> Sensor Ports: | 16 | 32 | 48 |
| • Relay Outputs: | 2 | 4 | 6 |
| • Optional equipment: | | | |
| • <i>Go-Probe</i> Sensors | 16 (max) | 32(max) | 48(max) |
| • Weight (kg): | 3.4 | 3.5 | 3.6 |
| • Network: | 10/100Mbps Ethernet (auto-sense) | | |
| • Configuration: | Telnet, browser, LCD | | |
| • Monitoring: | Browser, NMS, Telnet | | |
| • Dimensions (cm): | 4.4 (h) x 43.5 (w) x 27.1 (d) | | |
| • Power: | 100 - 240VAC 50/60Hz | | |
| • Status Indicators: | Status LCD, Power LED, 10/100 LED | | |
| • Firmware Upgrade: | Via network connection | | |
| • System Security: | IP based filtering and password protection | | |

- Alerts: Email (12 recipients)
SNMP traps (8 Receivers)
Voice/SMS via Alert Centre (optional)
SMS via GSM modem (optional)
- Alert Configuration: 1. Temperature/Humidity: High/Low warning and critical thresholds
2. *Go-Probe* Sensors: Normally open/closed or high/low active
- Logging: Historical event and status logs
- Log Interval: User-Configurable
- Graphs: Real-time and historical
- *Go-Probe* Sensors: Water Leak with 3-18m of sensor cable
Security Contact (Door Open)
Smoke
Power Fail
Universal Dry Contact sensor (normally open/closed or high/low)

Jakarta Ltd.—An ISO9001 Registered Firm. All specifications may be subject to change without notice